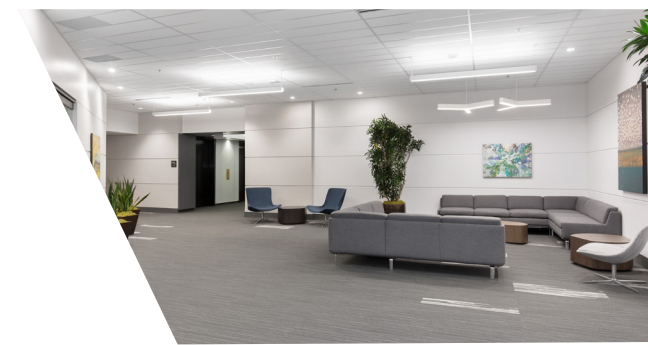




# Seattle's Globally Connected Office Space

International Place is where your business takes flight. This premier three-building office complex offers 549K SF of space, and is prominently visible to over 50M passengers traveling through SeaTac International Airport annually.

New improvements completed in 2023 have made International Place even better. You'll find numerous on-site amenities and easy access to all points in the Puget Sound area.



# The perfect hub for your business

## ON-SITE CAMPUS AMENITIES

Discover convenience at International Place. With on-site amenities including the renowned 13 Coins restaurant, fitness facility, conference center, and more. Plus, enjoy easy access to quality hotels and restaurants just steps away.



## ADVANTAGES INCLUDE



No B&O or utility taxes

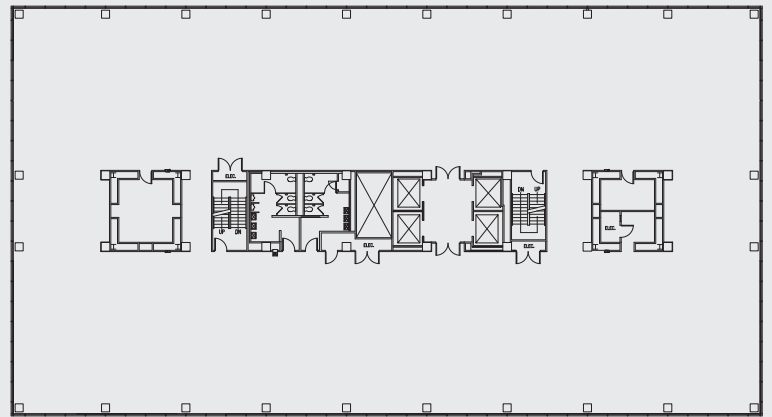


Renovated building & suites



4/1,000 parking ratio

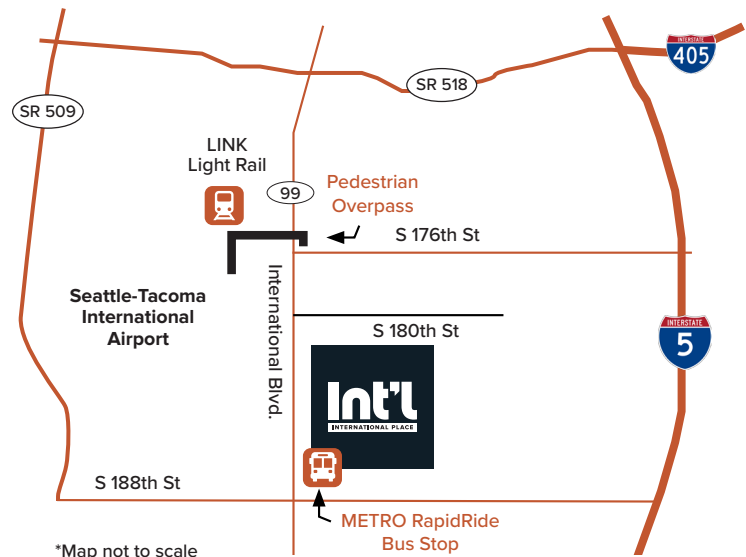
## TYPICAL FLOOR PLAN



## LOCATION // CONNECT

Conveniently located just one block from the Link Light Rail, and directly across from a Metro RapidRide Stop.

Enjoy quick access to major highways, I-5, I-405, SR 518, and 509. You can even walk across the street via a pedestrian overpass to reach SeaTac International Airport.



\*Map not to scale

## BROKER CONTACTS

**Cleita Harvey**  
+1 206 607 1794  
cleita.harvey@jll.com

**Jim Allison**  
+1 206 607 1787  
jim.allison@jll.com

